



acrijetfly™

For your next generation
IOL implantation



AcriJET FLY™ FEATURES¹

1. Single use lens injector system ensures smooth and confident surgeries.

2. Stable and semi-translucent injector body for controlled IOL injection process.

3. Easy loading system with haptics' railguard grooves provides controlled placing and folding of IOL.

4. Locking system assures full control during IOL injection.

5. Optimized cartridge tip size with thin and stabilized wall-thickness enables smooth and safe IOL implantation.

AVAILABLE IN TWO DIFFERENT OPTIONS

acrijetfly[™]_{1.8}

(1.8 mm incision size - suitable for MICS)


acrijetfly[™]_{2.2}

(2.2 mm incision size)



Incision size correlation (mm)

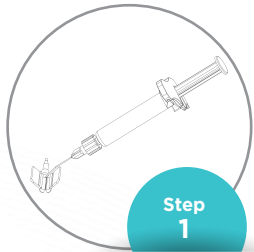
**IOL MODELS AND
DIOPTER RANGE¹**



Product Name	Wound-Assisted	Into-the bag
acrijetfly [™] _{1.8}	1.8	2.4
acrijetfly [™] _{2.2}	2.2	2.7

Injector	Incision Size	IOL Model	Maximum Diopter Range
acrijetfly [™] _{1.8}	≥1.8 mm	Acriva ^{UD} BB UDM 611 Acriva ^{UD} UD 613 Acriva ^{UD} BB UD 613 Enova GF3 Acriva ^{UD} Trinova Pro C	Sph ≤ 19.50 D
		Acriva ^{UD} BB T UDM 611	Sph ≤ 19.50 D Cyl < 05.00 D
acrijetfly [™] _{2.2}	≥2.2 mm	Acriva ^{UD} UD 613 Acriva ^{UD} BB UDM 611 Acriva ^{UD} BB UD 613 Enova GF3 Acriva ^{UD} Trinova Pro C	Sph ≤ 32.00 D
		Acriva ^{UD} BB T UDM 611	Sph ≤ 32.00 D Cyl ≤ 10.00 D

TIPS FOR IOL FOLDING



Step 1

Take the cartridge and fill in the grooves and the tunnel with Protectalon™ (Viscoelastic) from VSY Biotechnology.



Step 2

Take the IOL out of its container with a forceps by the haptics and center the IOL in the middle of the cartridge and press it firmly until it completely sits in the cartridge grooves.



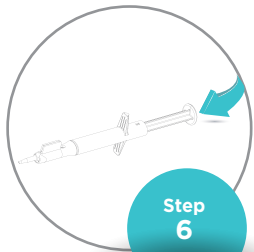
Step 3

Hold and lock the wings of the cartridge. Fold them until you hear a “click” sound. Ensure that neither the haptic nor the optic are wedged in the cartridge.



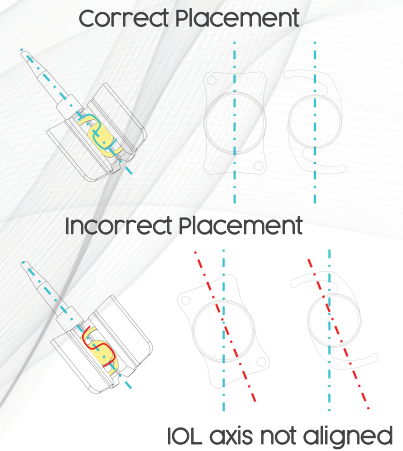
Step 4

Insert the cartridge into the front extremity of the injector



Step 6

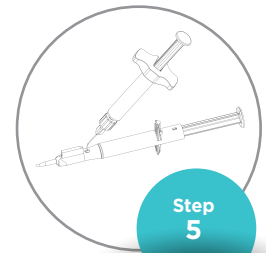
Push the injector plunger slightly towards the cartridge. Ensure that the silicon tip enters the cartridge smoothly and moves easily with the IOL. Place the tip of the cartridge slightly through the incision. Push the injector plunger gradually and carefully and ensure that the IOL comes out of the cartridge tip.



Correct Placement

Incorrect Placement

IOL axis not aligned



Step 5

Apply enough Protectalon™ (Viscoelastic) solution into the hole of the body of the injector to cover the silicon cushion it overflows



Scan for more infos



VSY Biotechnology GmbH
 Esslinger Str. 7 70771 Leinfelden-Echterdingen Germany
 contact@vsysbiotechnology.com / www.vsysbiotechnology.com

vsy-biotechnology vsybiotechnologylife youtube.com/VSYBiotechnology

References: 1. VSY Biotechnology Data on file Ö.YP-686.